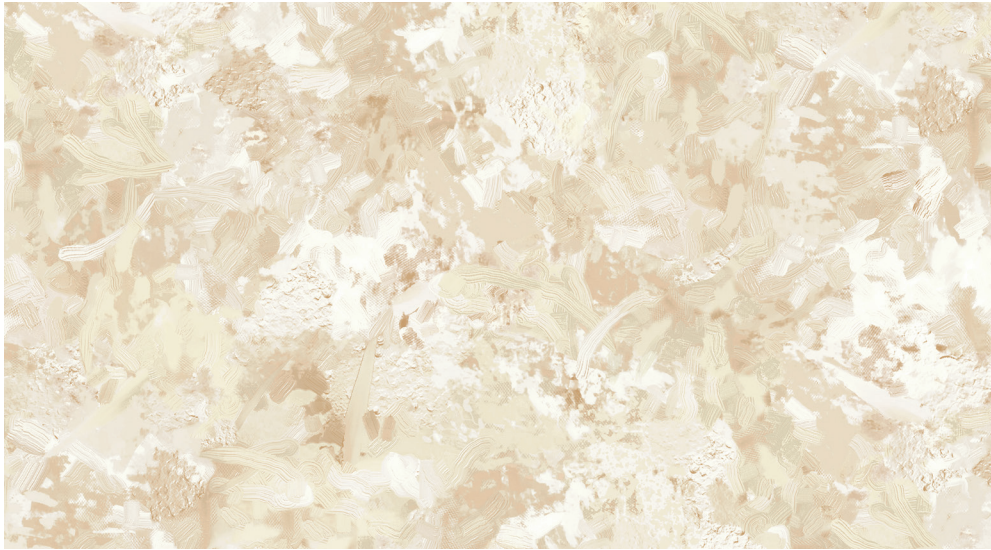


# CHROMA

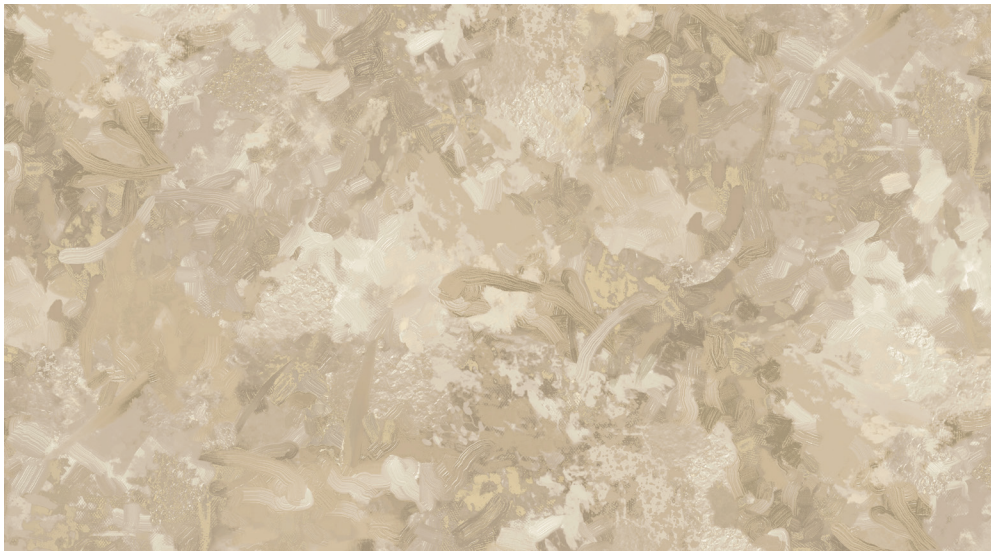
by Deborah Edwards



**9060-11** | Alabaster



**9060-91** | Frost



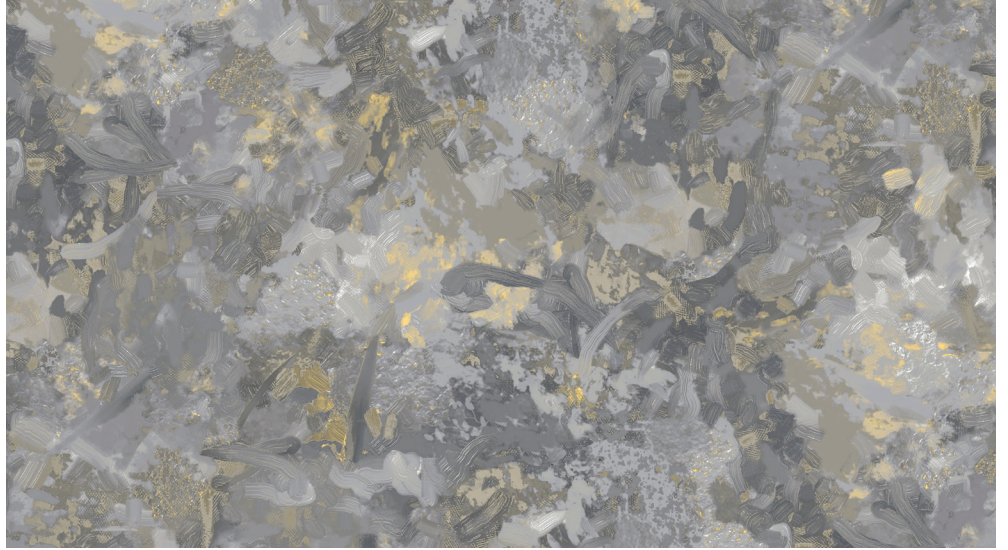
**9060-12** | Sandcastle



**9060-93** | Mineral



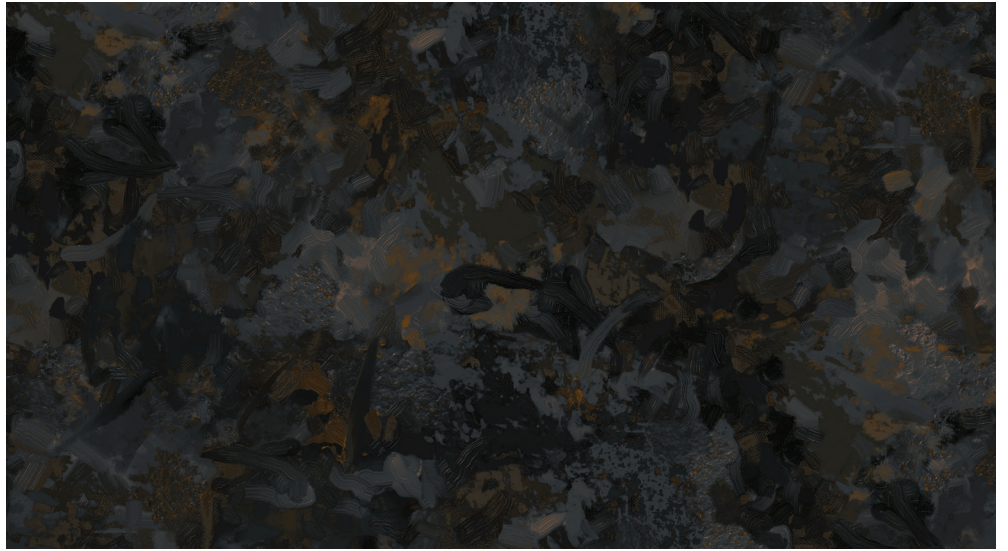
**9060-14** | Flax



**9060-95** | Flint

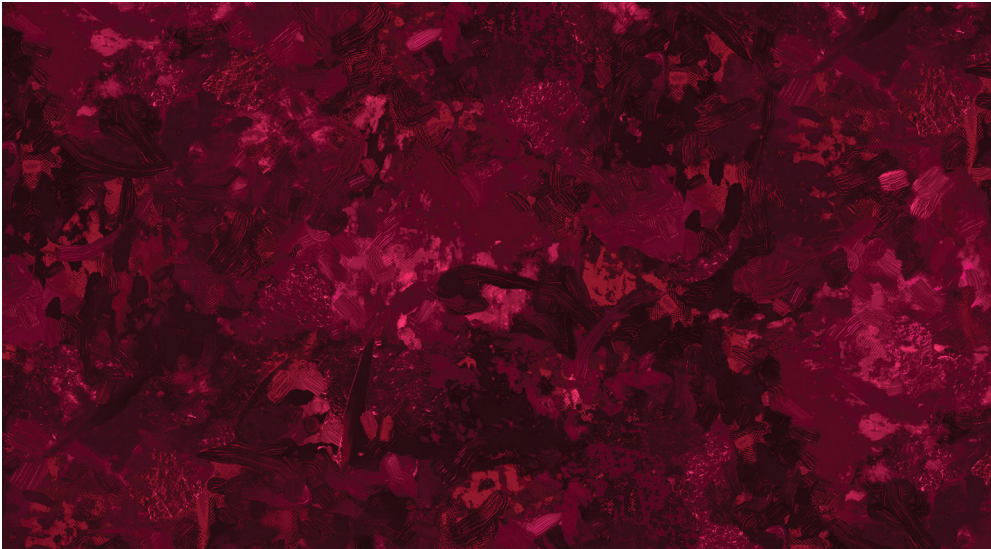


**9060-36** | Earth



**9060-99** | Obsidian

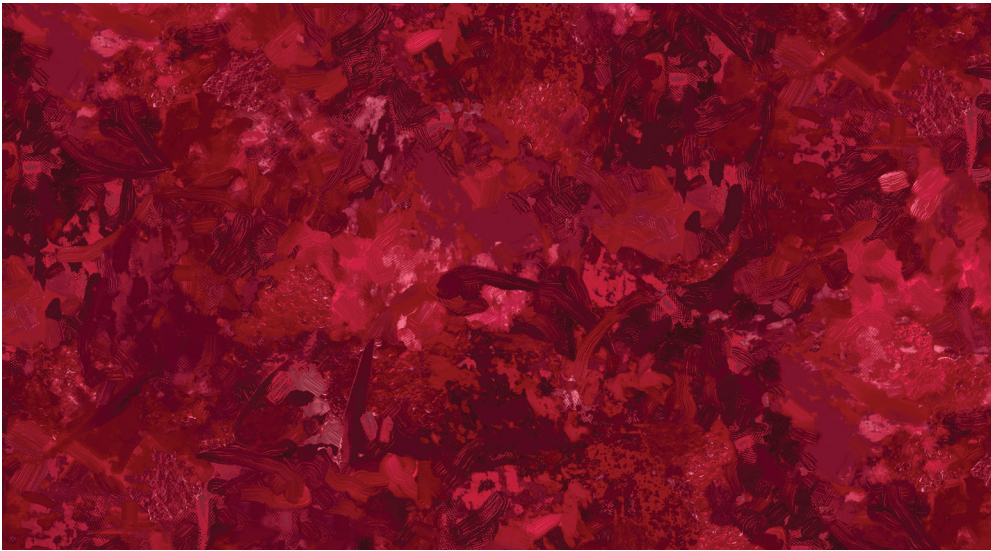




**9060-29** | Cabernet



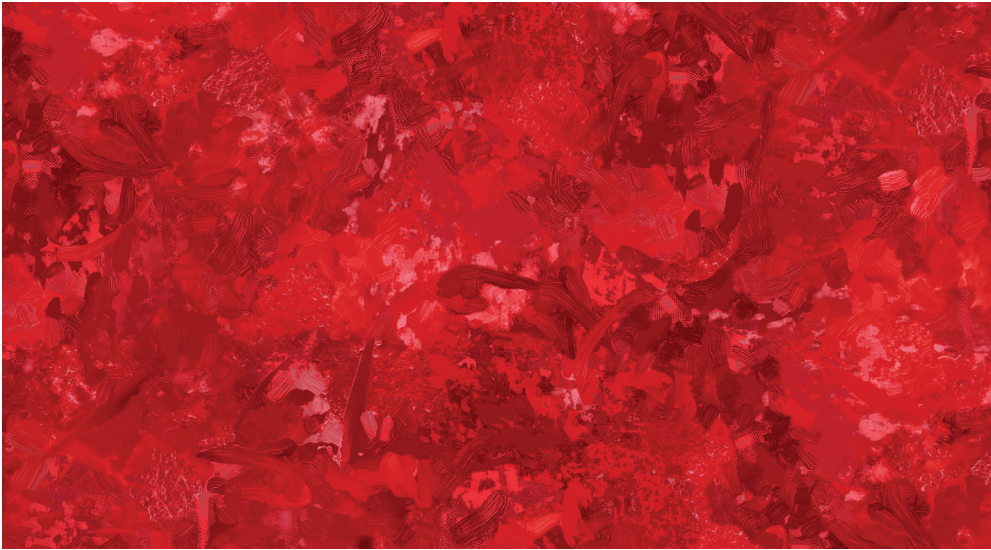
**9060-56** | Tuscan Sun



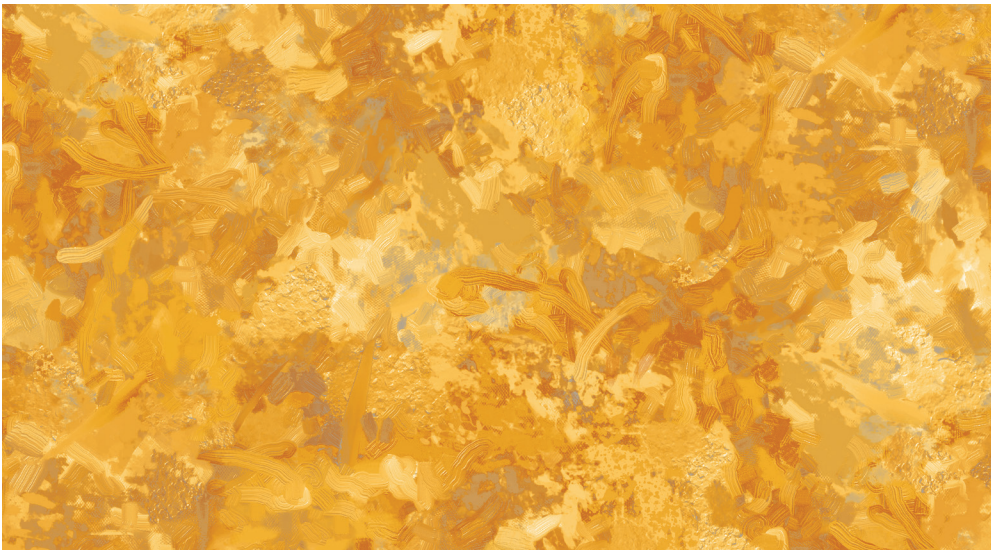
**9060-28** | Sangria



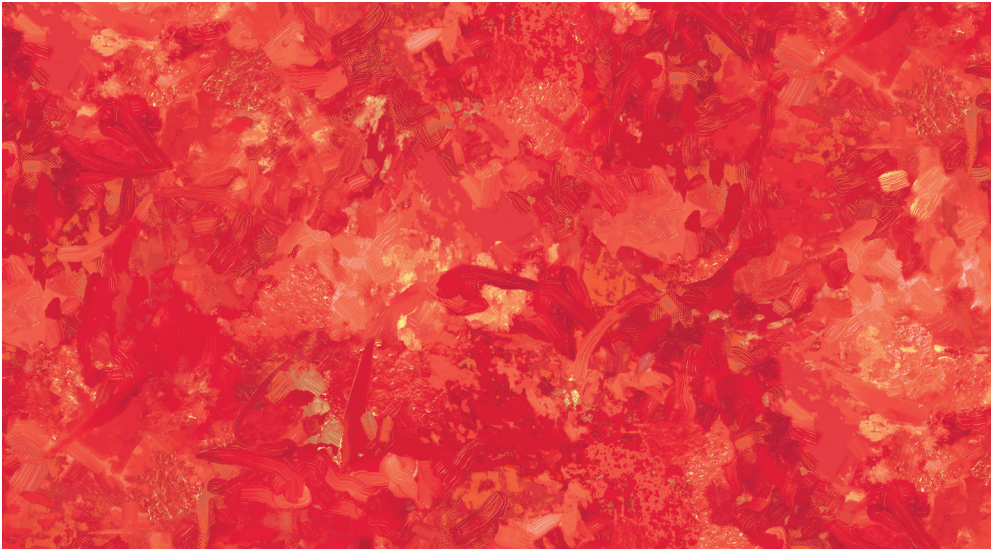
**9060-55** | Peach Melba



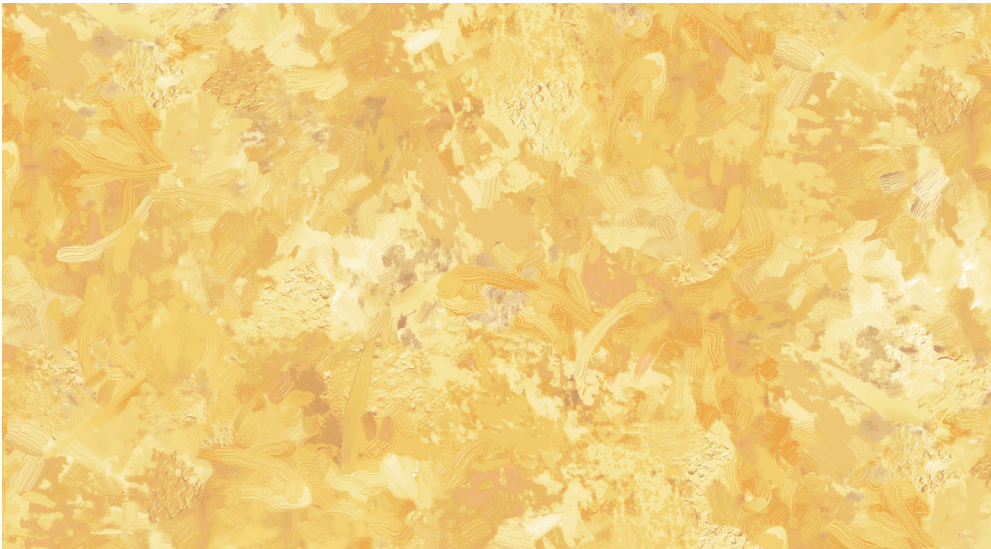
**9060-24** | Cardinal



**9060-53** | Sunflower

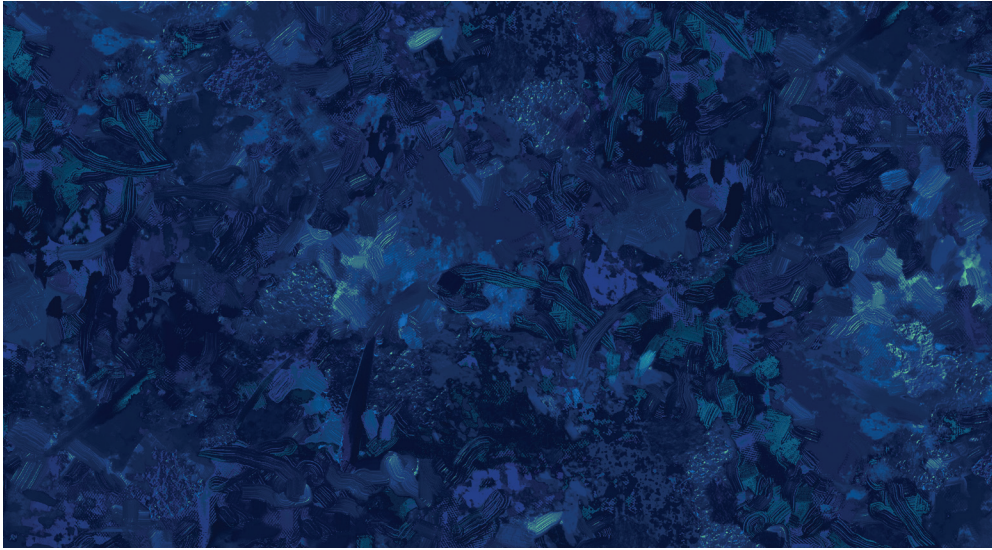


**9060-23** | Fire Coral

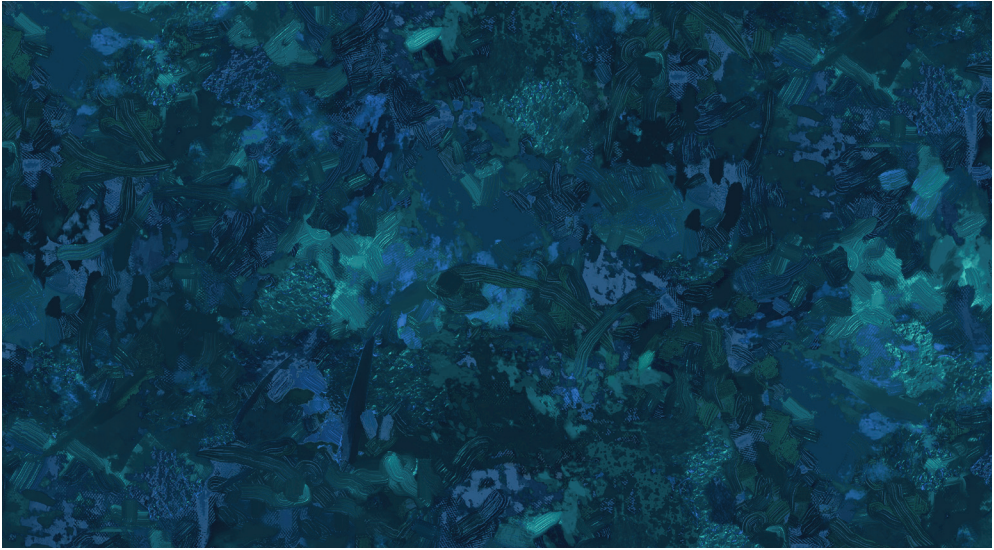


**9060-52** | Pineapple Crush

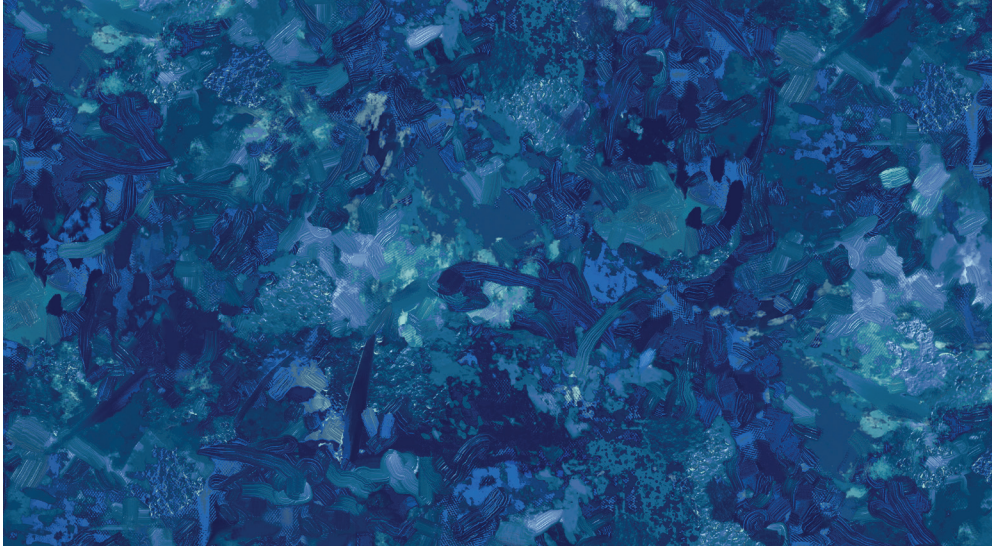




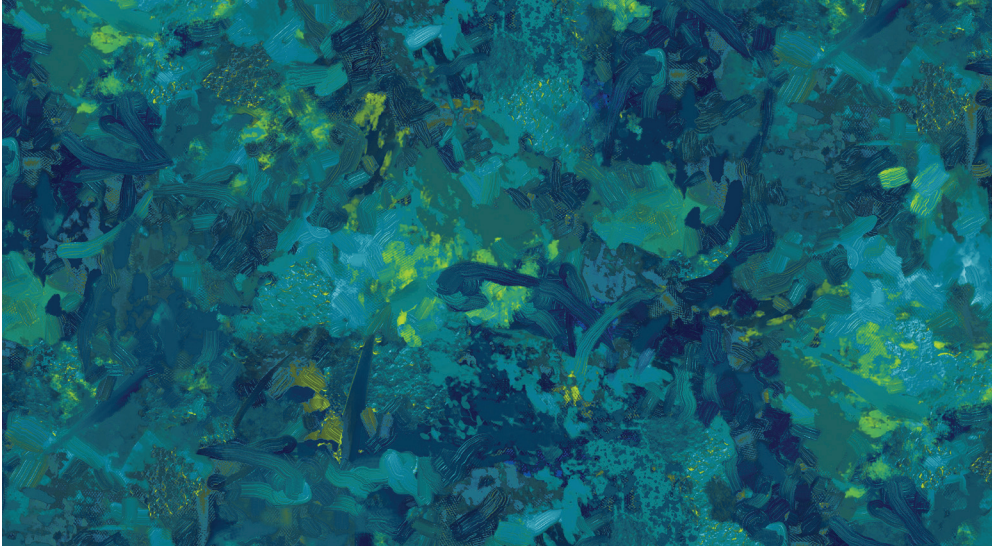
9060-49 | Midnight



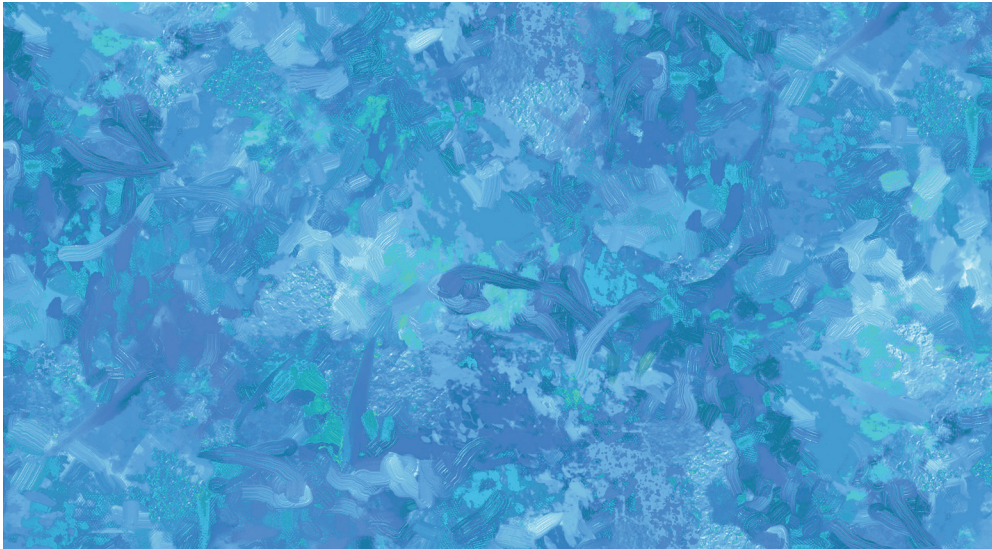
9060-69 | Juniper



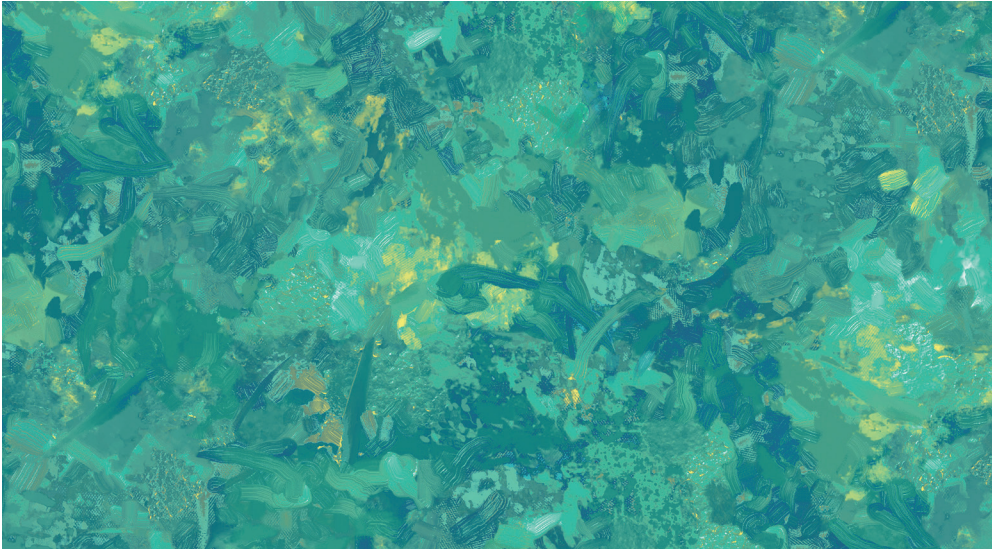
9060-46 | Lapis



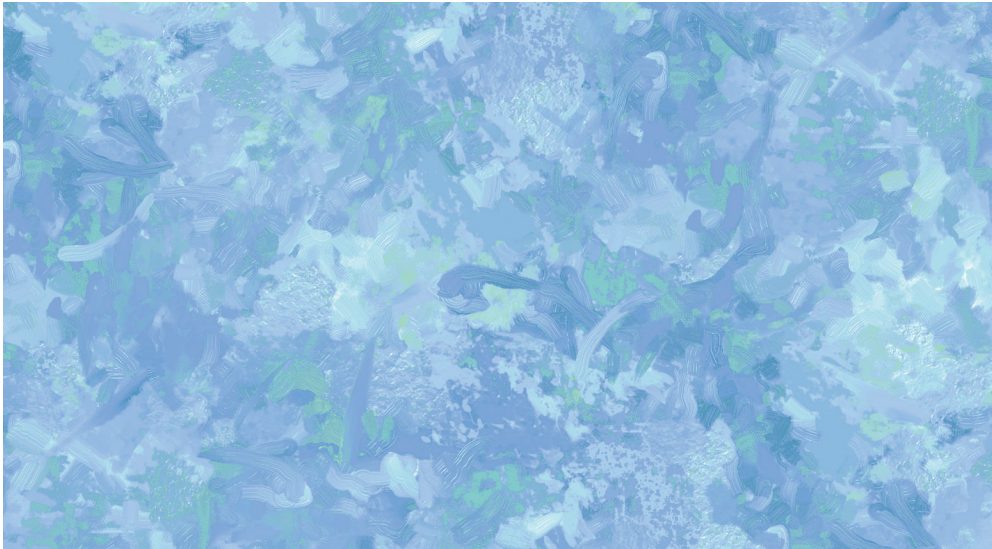
9060-66 | Peacock



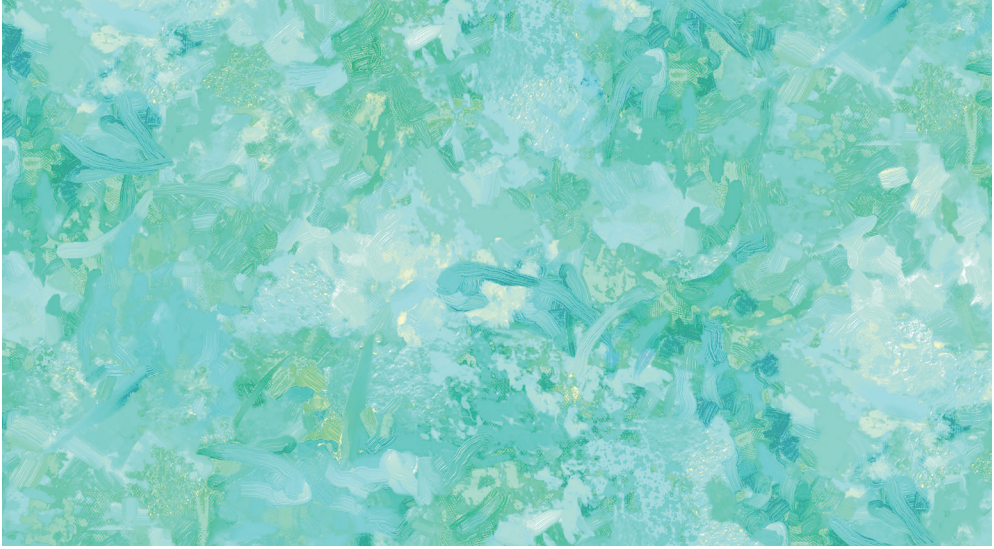
9060-44 | Bahama Blue



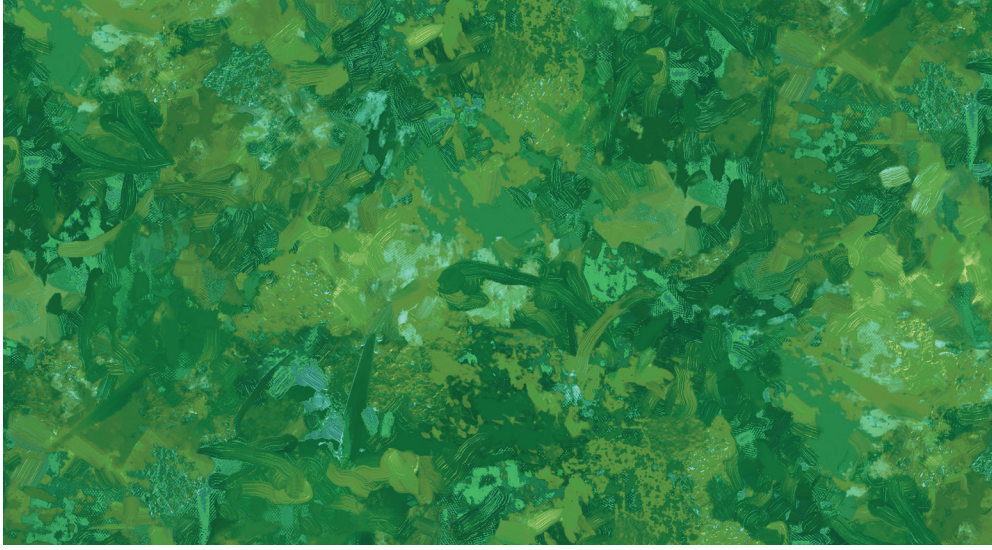
9060-64 | Bayou



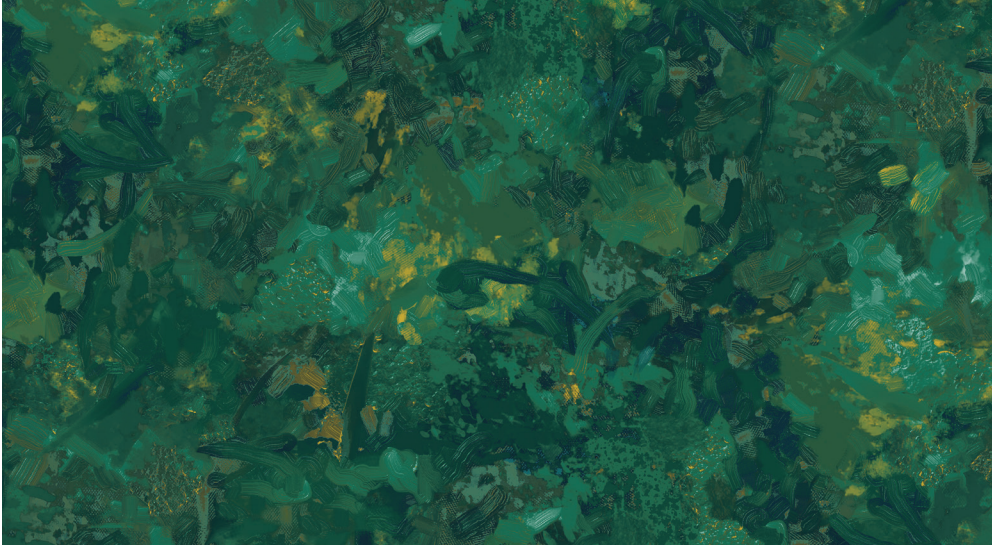
9060-42 | Sea Breeze



9060-62 | Spa

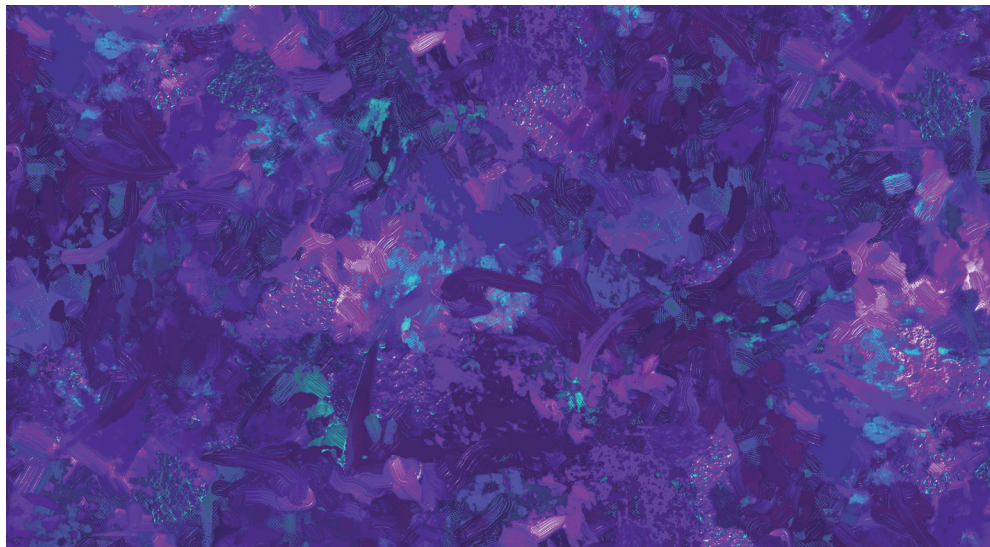


9060-74 | Rainforest



9060-76 | Spruce

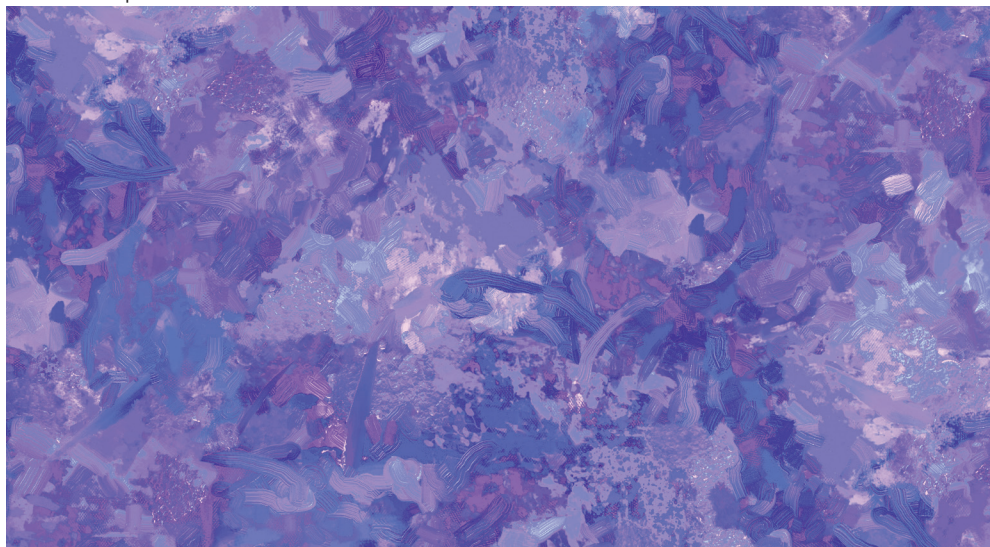




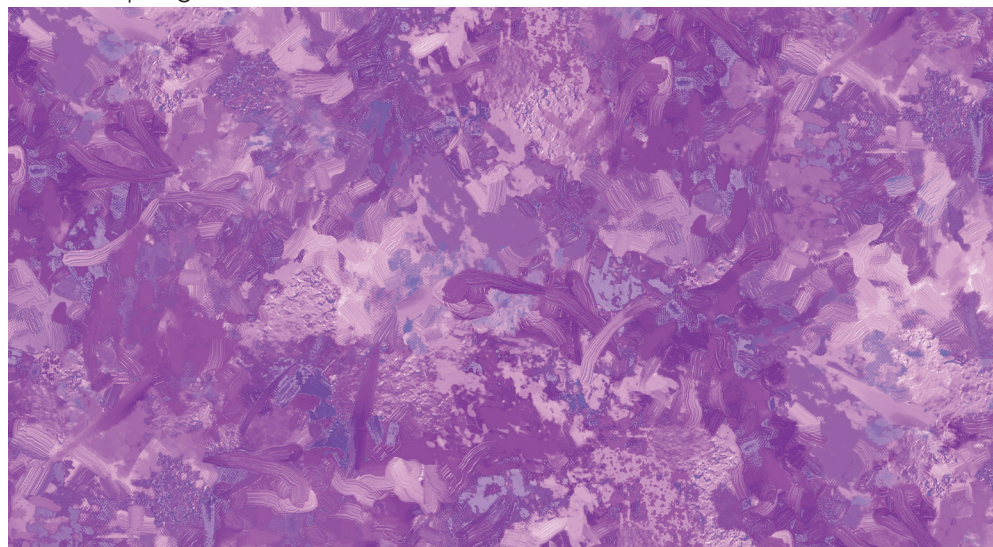
**9060-88** | Violet



**9060-84** | Magenta



**9060-87** | Iris



**9060-83** | Orchid

# CHROMA by Deborah Edwards

Created by Deborah Edwards, Chroma offers a rainbow of color in a unique artistic blender. The impressionistic style encompasses a wide range of color and values creating a sense of light and shadow in each brush stroke making blending easy. Use multiple colors together or mix with other patterns. The spectrum of 30 colors spanning the color wheel as well as cool and warm neutrals provide a palette for every consumer sentiment.